



Session 2:
Trade-Offs in the East Section of the
Study Area



PURPOSE

- Review the key issues and trade-offs the project team has identified in the east section of the GTA West study area
- Obtain your input on the key issues and trade-offs

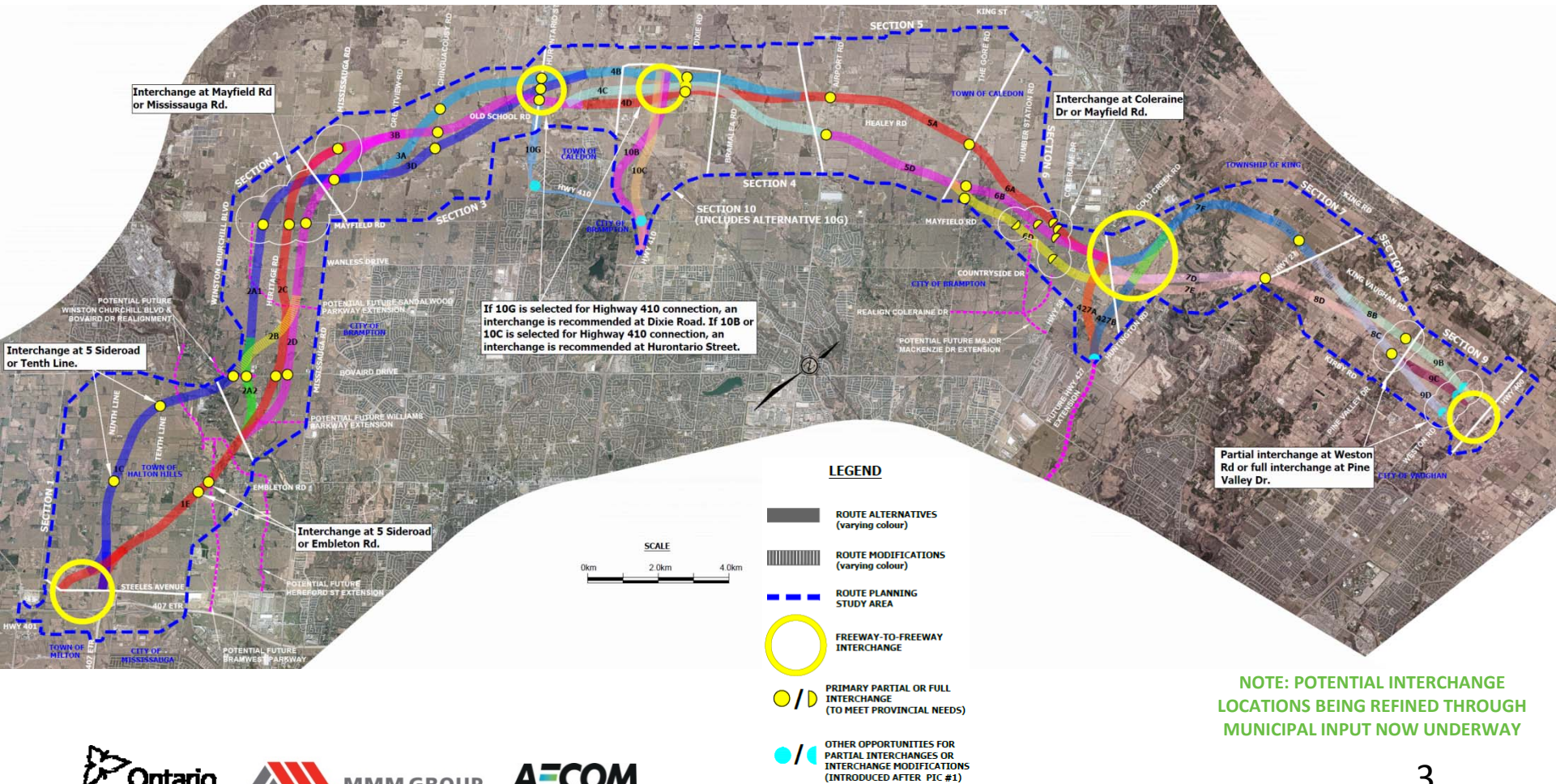




GTA West

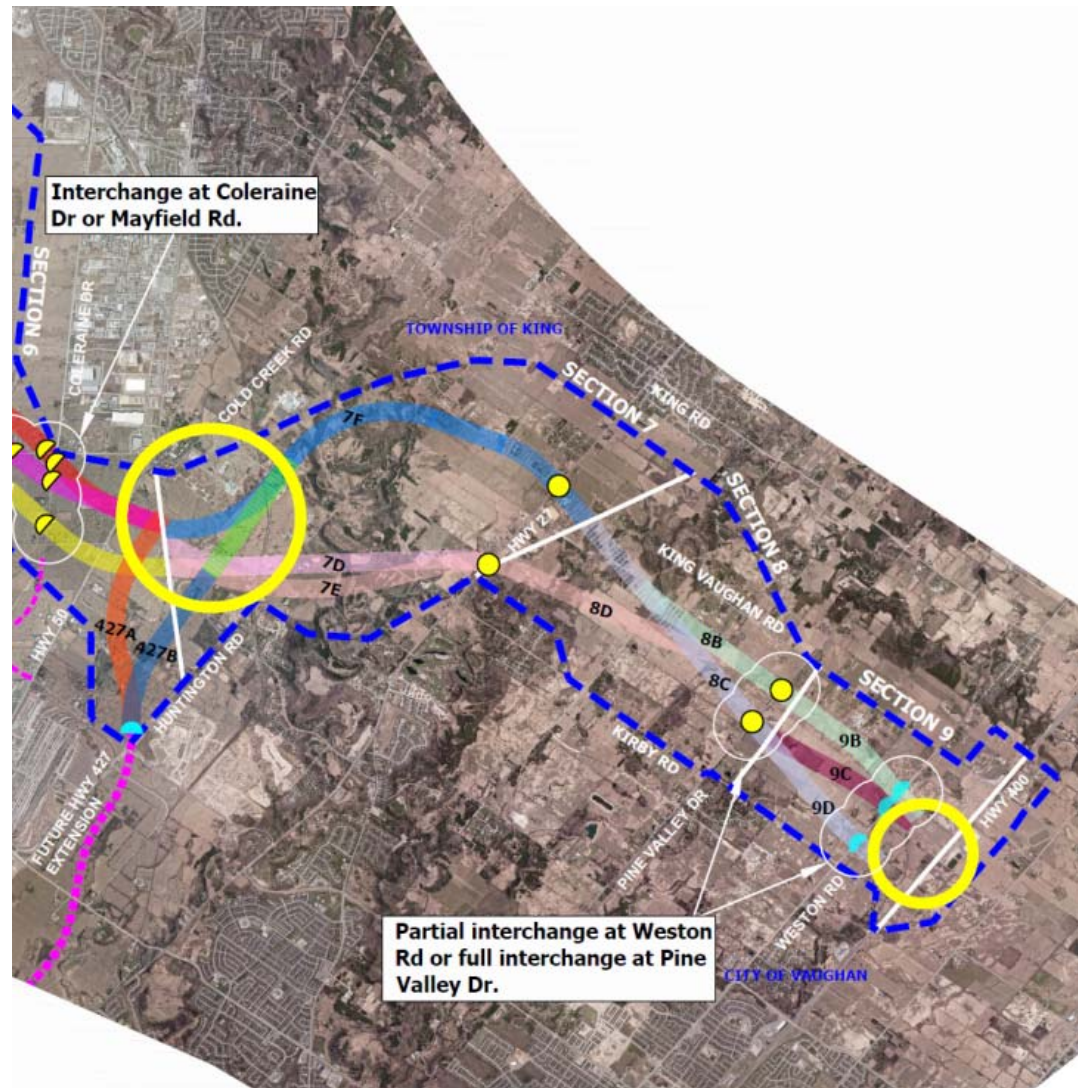
Planning with Vision | Planning for People

REFINED SHORT LIST OF ROUTE ALTERNATIVES AND POTENTIAL INTERCHANGE LOCATIONS



SHORT LIST OF ROUTE ALTERNATIVES AND POTENTIAL INTERCHANGE LOCATIONS EAST SECTION

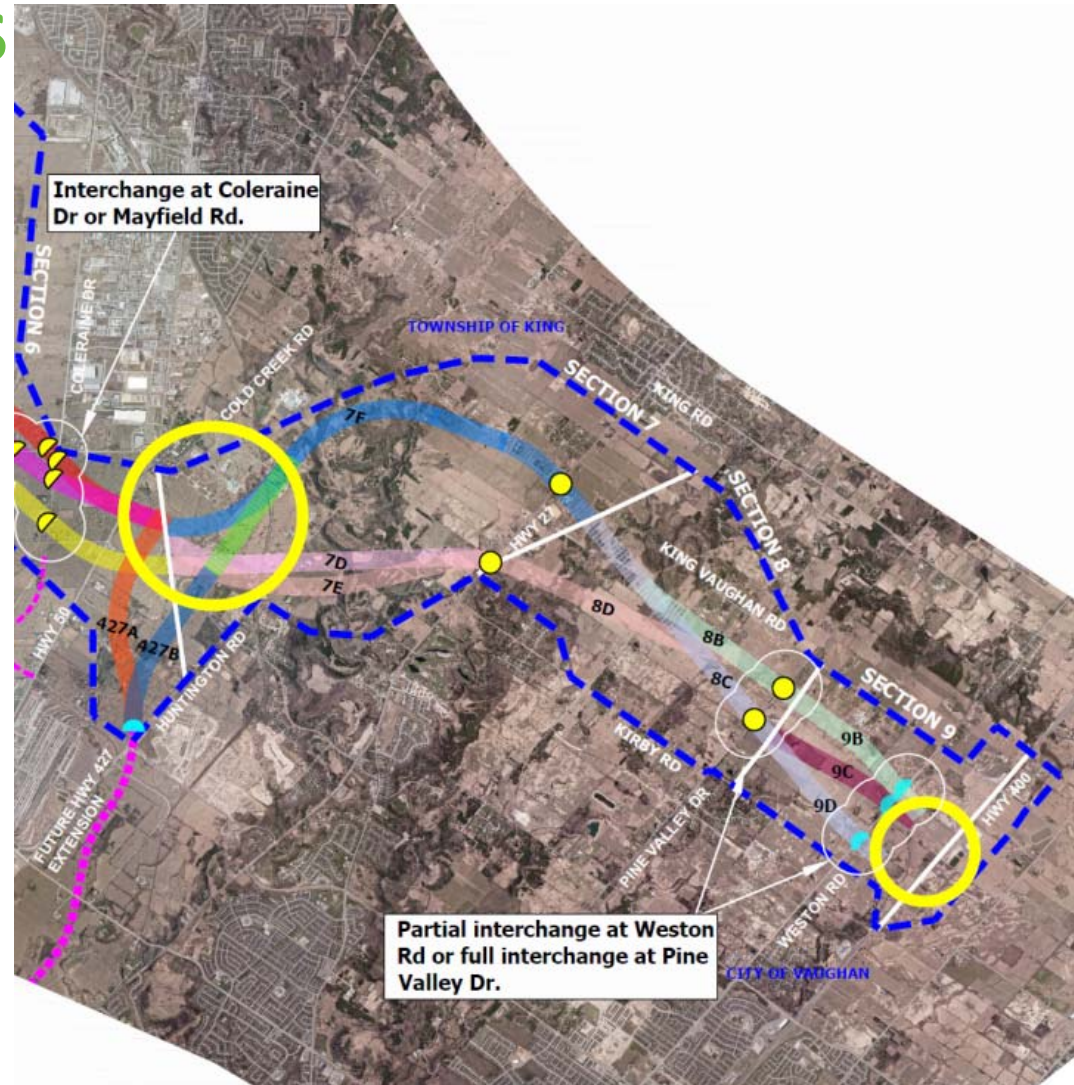
NOTE: POTENTIAL INTERCHANGE
LOCATIONS BEING REFINED THROUGH
MUNICIPAL INPUT NOW UNDERWAY





EXAMPLES OF TRADE-OFFS

- Road network in the Highway 50/ Coleraine Drive/Highway 427 area
 - Compatibility with future municipal road network, interchange spacing, development
- North vs. south crossing of Humber River
 - Natural environment, residences, proximity to Kleinburg
- Interchange options
 - Weston Road vs. Pine Valley Drive, compatibility with future municipal vision (Vaughan Employment Lands), natural environment





GTA West

Planning with Vision | Planning for People

FACILITATED GROUP DISCUSSION

FACILITATED GROUP DISCUSSION – EAST SECTION

1. Do you prefer a northerly or a southerly crossing of the Humber River and why?
2. What are your interchange option preferences in the Highway 427 / Coleraine Drive / Highway 50 / Mayfield Road area and why?
3. Do you prefer an interchange at Pine Valley Drive or Weston Road?